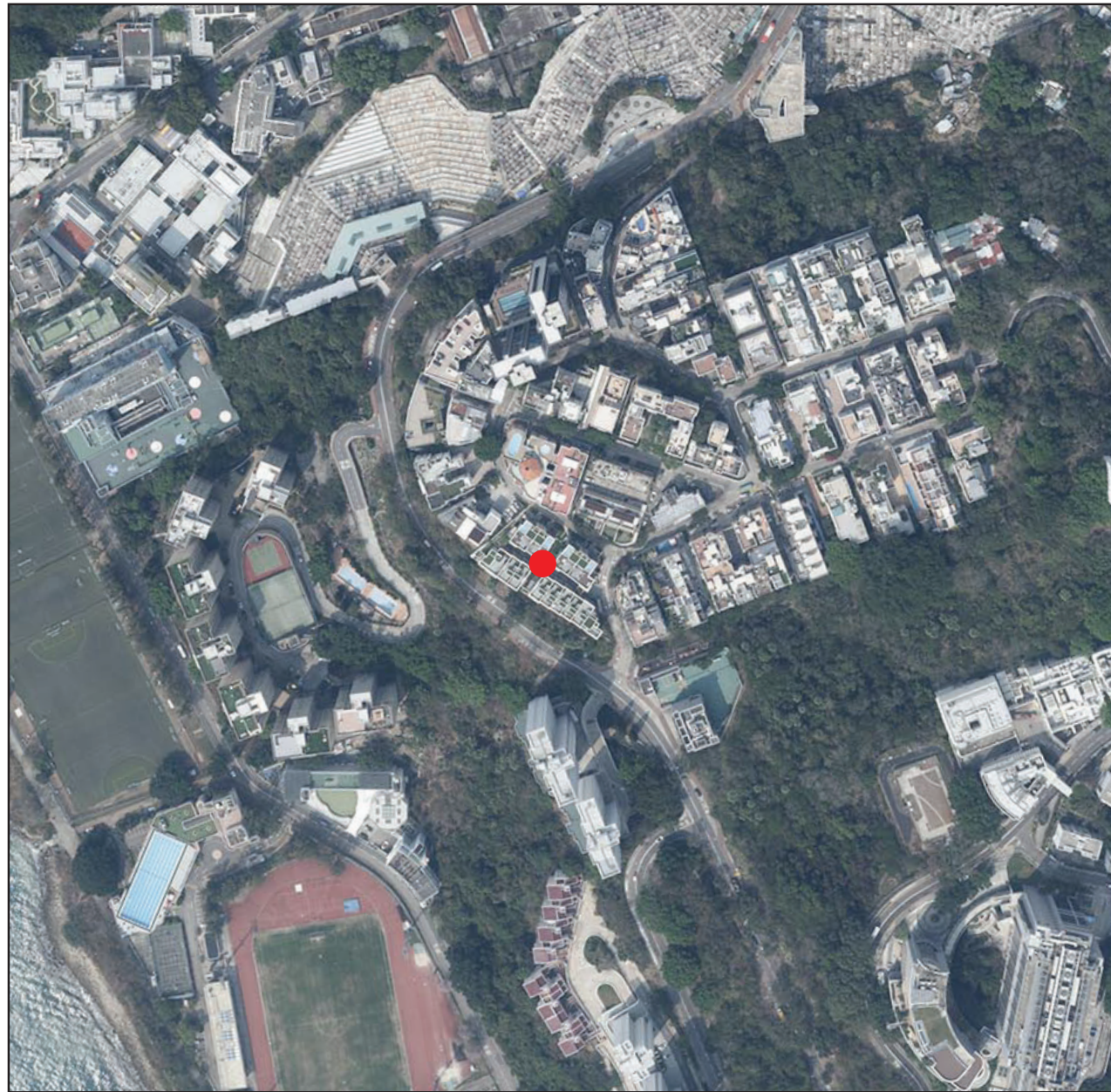


AERIAL PHOTOGRAPH OF THE DEVELOPMENT

發展項目的鳥瞰照片



● Location of the Development
發展項目的位置

Extracted from the aerial photo taken by the Survey and Mapping Office of the Lands Department at a flying height of 6,000 feet, photo No. E219039C, dated 8th March 2024.

摘錄自地政總署測繪處於2024年3月8日在6,000呎飛行高度拍攝之鳥瞰照片，編號為E219039C。

Survey and Mapping Office, Lands Department, The Government of HKSAR © Copyright reserved - reproduction by permission only.

香港特別行政區政府地政總署測繪處 © 版權所有，未經許可，不得複製。

Note:

1. The aerial photograph is available for free inspection during normal office hours at the sales office.
2. Due to technical reasons (such as the irregular shape of the Development), the aerial photograph shows more than the area required under the Residential Properties (First-hand Sales) Ordinance.
3. The Vendor advises prospective purchaser to conduct an on-site visit for a better understanding of the Development site, its surrounding environment and the public facilities nearby.

備註：

1. 該鳥瞰照片存於售樓處，於正常辦公時間內供免費查閱。
2. 因技術原因(例如發展項目之不規則形狀)，鳥瞰照片所顯示之範圍多於《一手住宅物業銷售條例》所要求。
3. 賣方亦建議準買家到有關發展地盤實地考察，以對該發展地盤，其周邊地區環境及附近的公共設施有較佳了解。